

CONC. FOOTING – REFER TO STRUCTURAL DRAWINGS.

2- CONCRETE SLAB ON 6 MILL VAPOR BARRIER – REFER TO
STRUCTURAL DRAWINGS.

3- WELL COMPACTED FILL.
A CERTIFICATE OF COMPLIANCE SHALL BE ISSUED TO THE BUILDING
DEPARTMENT BY THE LICENSED PEST CONTROL COMPANY THAT CONTAINS
THE FOLLOWING STATEMENT:
" THE BUILDING HAS RECEIVED A COMPLETE TREATMENT FOR THE
PREVENTION OF SUBTERRANEAN TERMITES. TREATMENT IS IN ACCORDANCE
WITH RULES AND LAWS ESTABLISHED BY THE FLORIDA DEPARTMENT OF
AGRICULTURE AND CONSUMER SERVICES."
PER 18B.1.7 (TERMITE PROTECTION) FBC 7TH EDITION (2020)

4- 3/4" (MIN.) EXTERIOR WALL RECESS PER FBC 7TH EDITION (2020) SECTION 1820.3.4

5- APPLIED WOOD BASE – REFER TO FINISH SCHEDULE.

6- FINISH FLOOR (TO BE SELECTED TO OWNER) G.C. TO COORDINATE FINISH
FLOOR ELEVATIONS WITH ADA REQUIREMENTS

7- 'TPO' ROOFING

8- LIGHT WEIGHT INSULATION CONCRETE (R-30 MIN.)

9- CONCRETE SLAB – 1 HR FIRE RATED. SEE TABLE 721.1 (2) FBC 7TH EDITION (2020)
ON SHEET AO.04 (REFER TO STRUCTURAL DWGS. FOR SLAB REINFORCEMENT).

0- SLIDING GLASS DOOR GENERAL CONTRACTOR TO VERIFY ALL M.O. W/ MANUF.
(REFER TO DOOR SCHEDULE)

1- CONCRETE STAIRS (REFER TO STRUCTURAL DRAWINGS.)

2- 1/2" STUCCO FINISH ON CONCRETE (SKIM COAT)

3- PRECAST CONCRETE LINTEL (SEE STRUCTURAL DWG)

4- R-13 INSULATION (MINERAL WOOL) ON METAL FRAME PARTITIONS BETWEEN DWELLING UNIT

5- ALUMINUM. EYEBROW (SEE DETAIL)

6- 8" CMU WALL – 1 HOUR RATED.

7- 3 5/8" MTL. STUD PART W/ 1/2" GYP. BD. EACH SIDE.

8- FIRE STOP @ 8"-0" ABOVE SLAB – 1 1/2"

9- BROOM SWEEP CONC. FINISH.

20- PROVIDE FULL GROUT AT THE FIRST COURSE OF THE INTERIOR MASONRY CORRIDOR
(SEE STRUCT DWG)

21- ALUM. RAILING W/ MESH AT 4" O.C. (MAX.). 42" HIGH. RAILINGS SHALL COMPLY W/
1015.4, 1607.8.1, 1607.8.11, 1607.8.17 AND ALL APPLICABLE PROVISIONS
THEREIN. PRE-FAB METAL RAILING MANUFACTURER TO SUPPLY SHOP DRAWINGS TO
ARCHITECT FOR APPROVAL. SEE DETAIL 2/A7.00

22- GRADE.

23- CONCRETE WINDOW SILL (SEE STRUCTURAL DWGS).

24- 1/2" ROUND STUCCO DRIP EDGE AT 2" FROM BOTTOM EXTERIOR CORNER.

25- MARBLE WINDOW SILL.

26- INSULATION IN FURRING SPACE (R-7.1)

27- ALUMINUM WINDOW
GENERAL CONTRACTOR TO VERIFY ALL MASONRY OPENINGS WITH
WINDOW MANUF. (REFER TO WINDOW SCHEDULE)

28- CONTROL JOINT.

29- FIRE CAULKING (1-HOUR). SEE DETAIL 2/A7.02

30- FRAME DOWN FOR A/C SOFFIT W/ 1/2" G.W.B.
ON 2 1/2" METAL CHANNELS @ 16" O.C.

31- NOT USED

32- STAIR HANDRAIL AT 2'-10" ABOVE NOSING W/ INTEGRAL
GUARDRAIL AT 3'-6" ABOVE NOSING. SEE DETAIL 6/A7.00

33- WALL MOUNTED STAIR RAIL AT 2'-10" ABOVE NOSING. SEE DETAIL 3/A7.00

34- SPRAYED TEXTURED CEILING ON CONC. SLAB.

35- PROVIDE FULL GROUT MASONRY PARAPET AT THIS LOCATION AND THE FIRST COURSE
AT THE ENTIRE PARAPET TYP. (SEE STRUCT DWG)

NOTE:
FLORIDA BUILDING CODE 7TH EDITION (2020) – SECTION 717.2 FIRE BLOCKING. IN
COMBUSTIBLE CONSTRUCTION, FIRE BLOCKING SHALL BE INSTALLED TO CUT OFF CONCEALED
DRAFT OPENINGS (BOTH VERTICAL AND HORIZONTAL) AND SHALL FORM AN EFFECTIVE
BARRIER BETWEEN FLOORS, BETWEEN A TOP STORY AND A ROOF OR ATTIC SPACE. FIRE
BLOCKING SHALL BE INSTALLED IN THE LOCATIONS SPECIFIED IN SECTIONS 717.2.2 THROUGH
717.2.7.

207 SOUND TRANSMISSION:

207.2 AIR-BORNE SOUND.

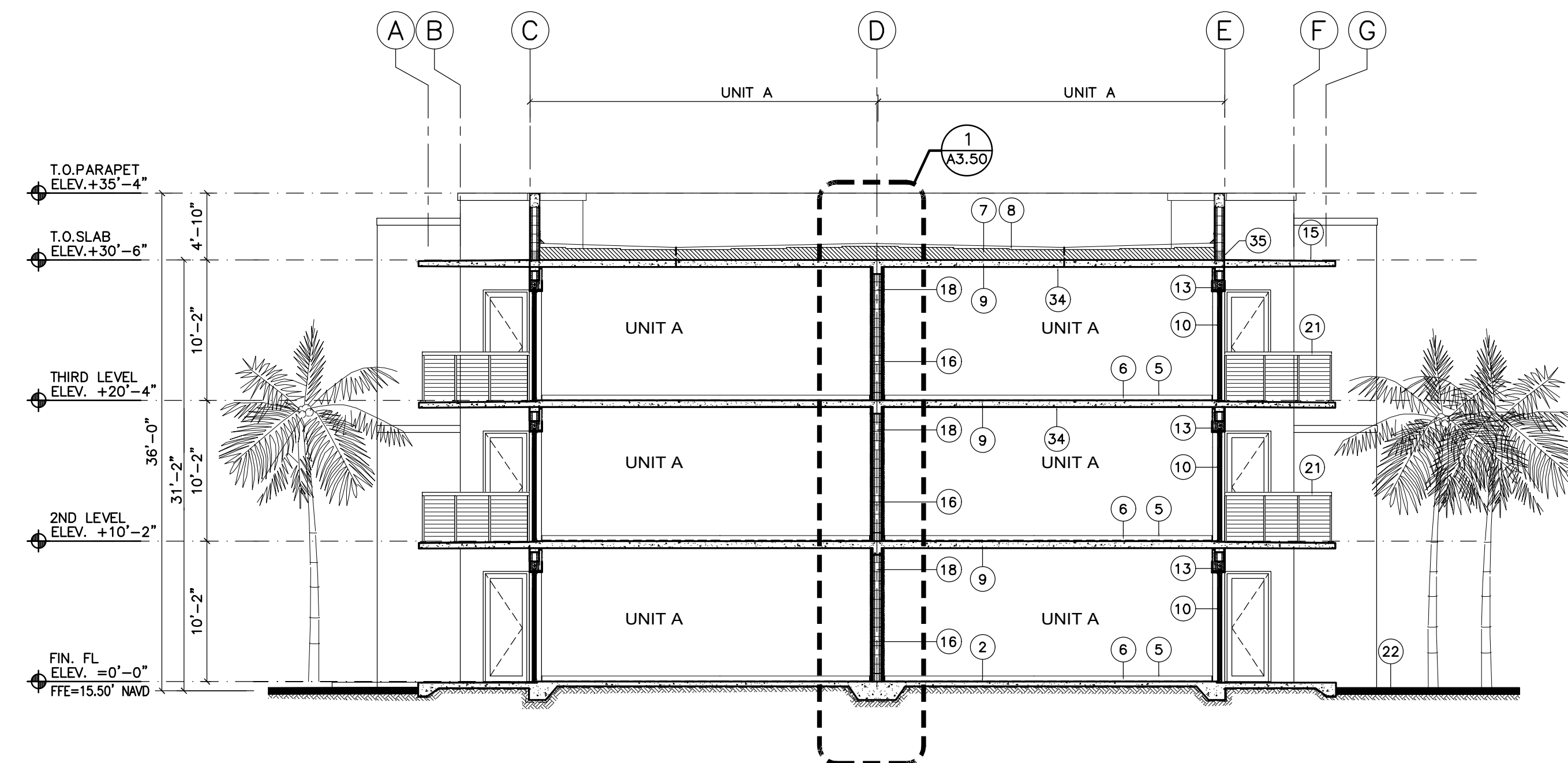
WALLS, PARTITIONS AND FLOOR/CEILING ASSEMBLIES SEPARATING DWELLING UNITS FROM EACH OTHER OR FROM PUBLIC OR SERVICE AREAS SHALL HAVE A SOUND TRANSMISSION CLASS (STC) OF NOT LESS THAN 50 (45 IF FIELD TESTED) FOR AIR-BORNE NOISE WHEN TESTED IN ACCORDANCE WITH . PENETRATIONS OR OPENINGS IN CONSTRUCTION ASSEMBLIES OR PIPING; ELECTRICAL DEVICES; RECESSED CABINETS; BATHTUBS; SOFFITS; OR HEATING, VENTILATING OR EXHAUST DUCTS SHALL BE SEALED, LINED, INSULATED OR OTHERWISE TREATED TO MEET THE REQUIRED RATINGS. THIS REQUIREMENT SHALL NOT APPLY TO DWELLING UNIT ENTRANCE DOORS; HOWEVER, SUCH DOORS SHALL BE TIGHT FITTING TO THE FRAME AND SILL.

207.2.1 MASONRY.

THE SOUND TRANSMISSION CLASS OF CONCRETE MASONRY AND CLAY MASONRY ASSEMBLIES SHALL BE CALCULATED IN ACCORDANCE WITH TMS 0302 OR DETERMINED THROUGH TESTING IN ACCORDANCE WITH .

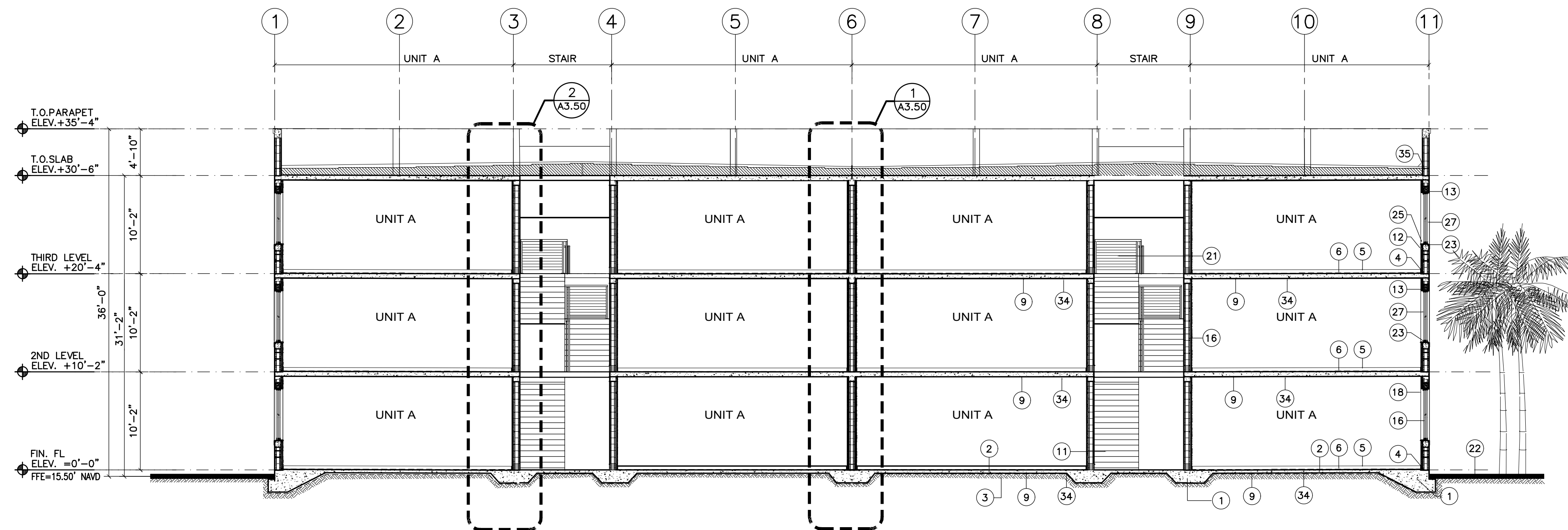
207.3 STRUCTURE-BORNE SOUND.

FLOOR/CEILING ASSEMBLIES BETWEEN DWELLING UNITS OR BETWEEN A DWELLING UNIT AND A PUBLIC OR SERVICE AREA WITHIN THE STRUCTURE SHALL HAVE AN IMPACT INSULATION CLASS (IIC) RATING OF NOT LESS THAN 50 (45 IF FIELD TESTED) WHEN TESTED IN ACCORDANCE WITH .



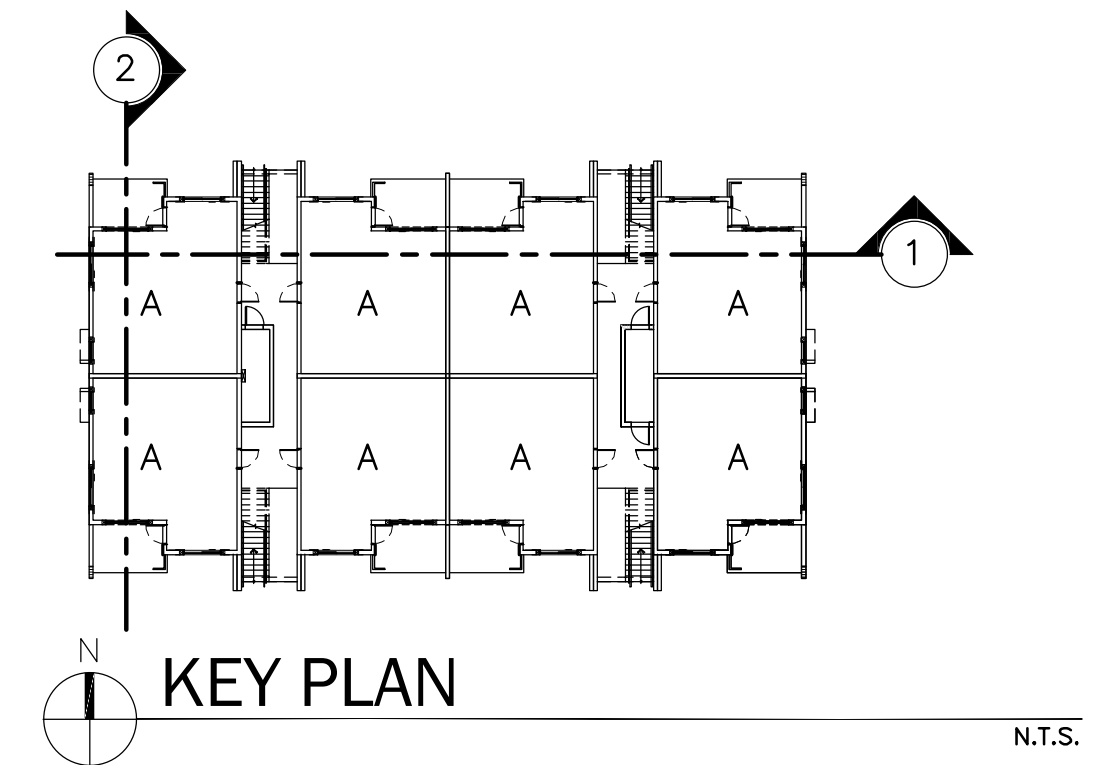
2 SECTION

SCALE: 1/8" = 1'-0"



1 SECTION

SCALE: 1/8" = 1'-0"

[illegible]

2203

**GATEWAY LUXURY
APARTMENTS**

LOCATED AT:
950 N POWERLINE ROAD,
POMPANO BEACH FL 33069

BURGOS LANZA & ASSOCIATES
1248 S ALHAMBRA CIRCLE
CORAL GABLES, FL 33146
(786) 554-9035
FAX 38052598
WWW.BURGOSLANZA.COM

PABLO BURGOS ARCHITECT AR 0095925
CARLOS LANZA ARCHITECT AR 0016081
S LANZA ARCHITECTS AND ARE
EXPRESS WRITTEN CONSENT OF THE SAME

**BURGOS
LANZA**
ARCHITECTS & PLANNERS
AA 28001519

Pablo
Burgos

Digitally signed by Pablo Burgos
DN: cn=Pablo Burgos, o=Burgos
Lanza & Assoc., ou=AR95925,
email=pburgos@burgoslanza.co
m, c=US
Date: 2022.06.30 06:22:00 -04'00'

Date: 2022.06.30 06:22:00 -04'00'

DATE	11/09/21
DRAWN	CR
PROJECT No.	2203
SCALE	AS-SHOWN

SECTION
BUILDING #
SCALE 1/8" = 1' - 0"
A-320

DRC

PZ22-12000008

8/17/2022